



NO.	Y	M	D	ISSUE
K	2025-02-05			Re-issued for Development Permit
J	2025-01-22			Issued for Coordination
I	2024-12-13			Issued for Review
				ISSUE

NO.	Y	M	D	ISSUE
				ISSUE

BUILDING ELEVATIONS  
**RECEIVED**  
**DP1359**  
**2025-FEB-12**  
 Current Planning  
 DRAWING NO.

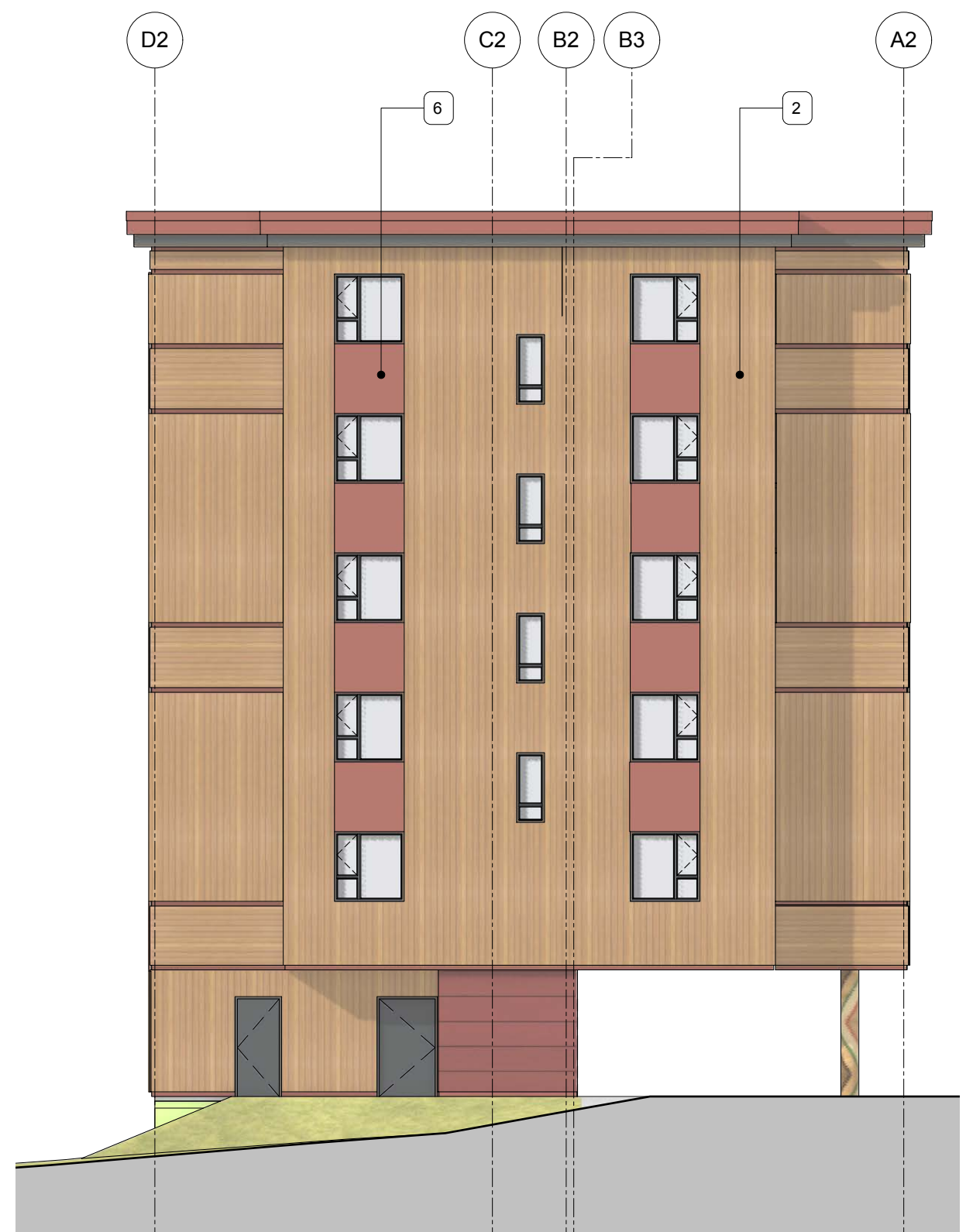


**1 NORTH ELEVATION**  
 Scale: 3/32" = 1'-0"



**2 EAST ELEVATION**  
 Scale: 3/32" = 1'-0"

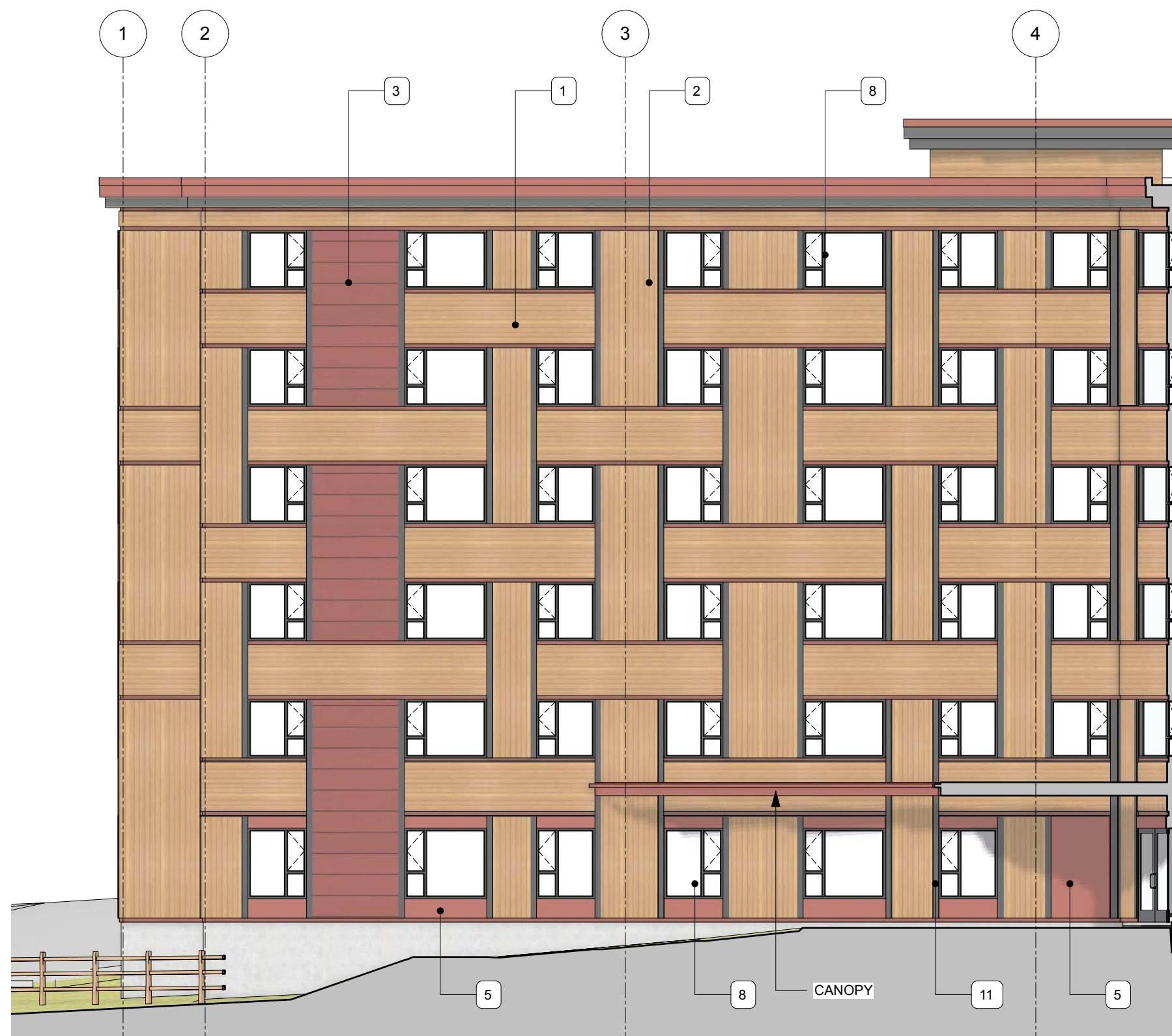
- T/O ELEVATOR PARAPET-R 68'-6" (35.38m)
- T/O PARAPET-R 63'-6" (33.85m)
- T/O FLOOR-6 52'-0" (30.35m)
- T/O FLOOR-5 42'-0" (27.30m)
- T/O FLOOR-4 32'-0" (24.25m)
- 65'-10 3/8" [20074.8]
- T/O FLOOR-3 22'-0" (21.21m)
- T/O FLOOR-2 12'-0" (18.16m)
- T/O FLOOR-1 0" (14.50m)
- NATURAL GRADE -2'-4.3" (13.780m)
- T/O FLOOR-B -10'-0" (11.45m)



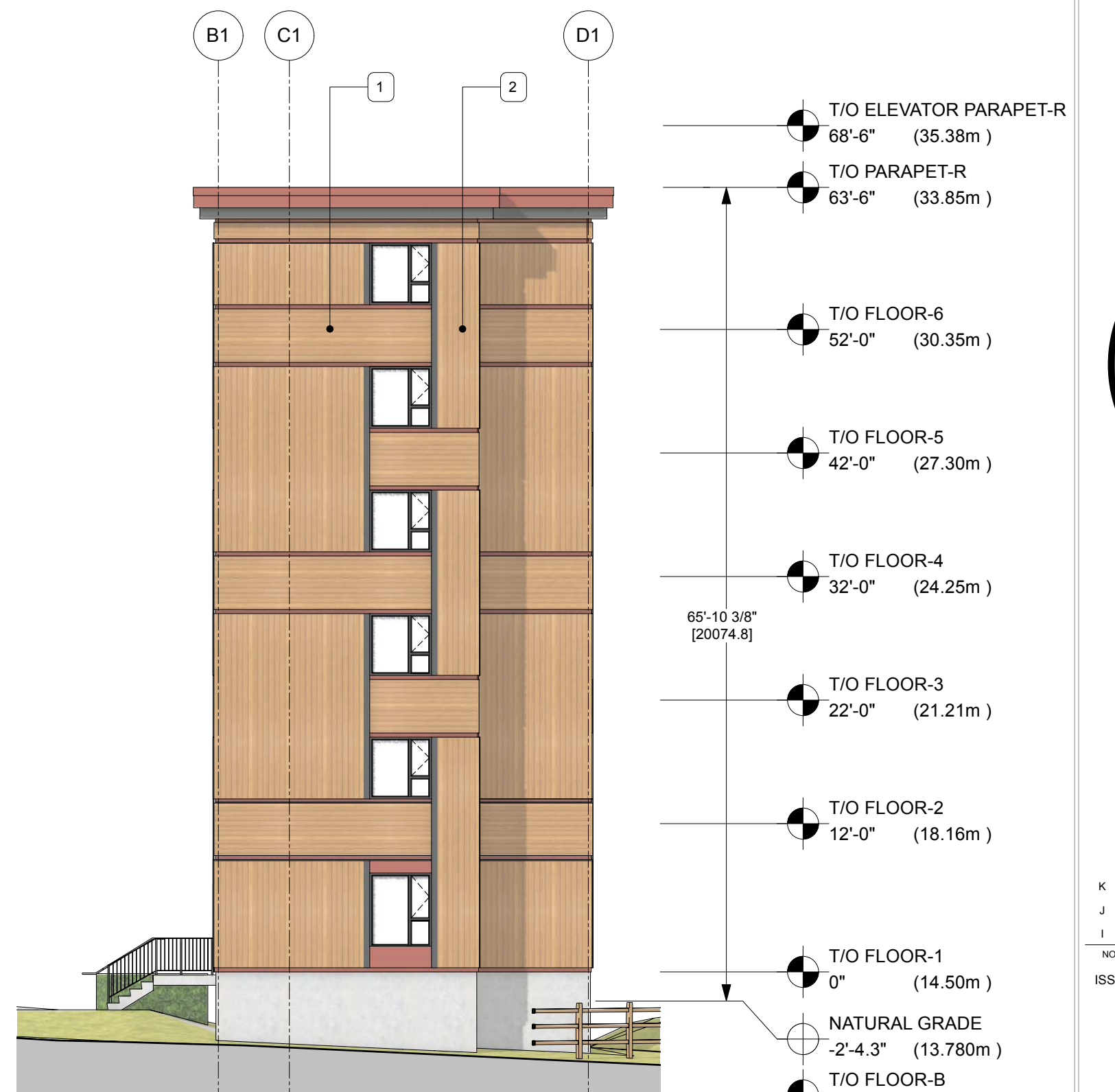
**3 SOUTH END ELEVATION**  
 Scale: 3/32" = 1'-0"



**4 WEST ELEVATION**  
 Scale: 3/32" = 1'-0"



**5 SOUTH ELEVATION**  
 Scale: 3/32" = 1'-0"



**6 WEST END ELEVATION**  
 Scale: 3/32" = 1'-0"

- T/O ELEVATOR PARAPET-R 68'-6" (35.38m)
- T/O PARAPET-R 63'-6" (33.85m)
- T/O FLOOR-6 52'-0" (30.35m)
- T/O FLOOR-5 42'-0" (27.30m)
- T/O FLOOR-4 32'-0" (24.25m)
- 65'-10 3/8" [20074.8]
- T/O FLOOR-3 22'-0" (21.21m)
- T/O FLOOR-2 12'-0" (18.16m)
- T/O FLOOR-1 0" (14.50m)
- NATURAL GRADE -2'-4.3" (13.780m)
- T/O FLOOR-B -10'-0" (11.45m)

**MATERIAL PALETTE**

- 1 HORIZONTAL METAL PLANK CLADDING  
COLOUR: WOOD TONE
- 2 VERTICAL METAL PLANK CLADDING  
COLOUR: WOOD TONE
- 3 HORIZONTAL METAL PLANK CLADDING - LARGE
- 4 COLOUR: RED  
VERTICAL METAL PLANK CLADDING  
COLOUR: RED
- 5 CEMENTITIOUS PANEL  
COLOUR: DARK GREY
- 6 CEMENTITIOUS PANEL  
COLOUR: RED
- 7 ANODIZED CURTAIN WALL  
COLOUR: BLACK
- 8 VINYL WINDOW
- 9 COLOUR: BLACK  
CEMENTITIOUS FASCIA PANEL  
COLOUR: DARK GREY &/OR RED
- 10 PAINTED MURAL ON CONCRETE COLUMN
- 11 VERTICAL METAL PLANK CLADDING  
COLOUR: GREY